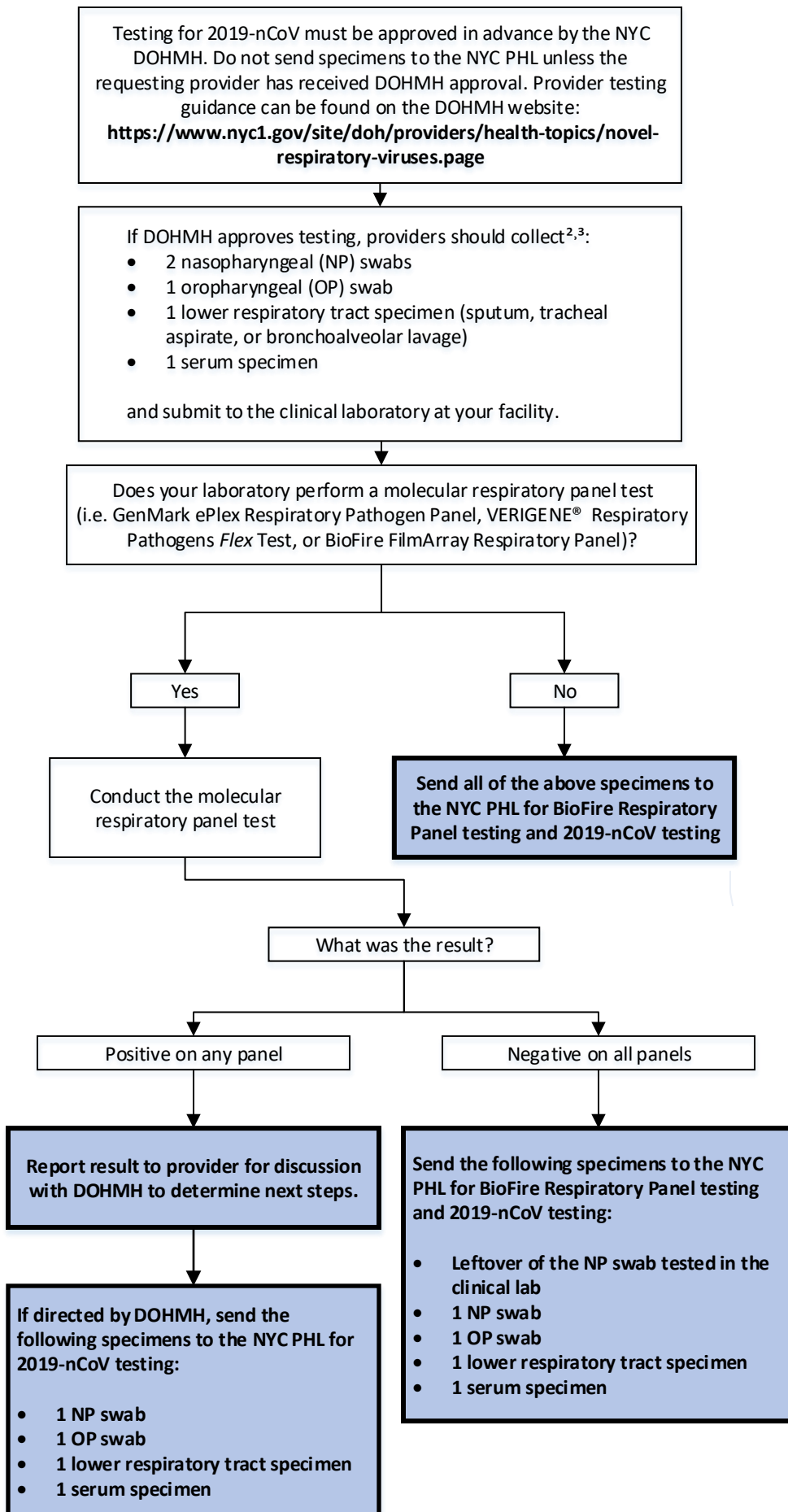


# GUIDANCE FOR CLINICAL LABORATORIES HANDLING SPECIMENS FOR 2019-nCoV TESTING



## **IMPORTANT INFORMATION**

**Do not attempt viral culture of specimens from patients suspected of being infected with 2019-nCoV.**

CDC has released interim laboratory biosafety guidelines for handling and processing specimens associated with 2019-nCoV. For detailed information, please visit:

<sup>1</sup> <https://www.cdc.gov/coronavirus/2019-nCoV/lab/lab-biosafety-guidelines.html>

For specimen collection and handling guidance, Laboratory Test Request Forms for 2019-nCoV testing and BioFire Respiratory Panel testing, and the link to order NYC PHL tests electronically through eOrder, please visit:

<sup>2</sup> <https://www1.nyc.gov/site/doh/providers/reporting-and-services/public-health-lab.page#forms>

For CDC and WHO guidance for healthcare professionals and laboratories, please visit:

<sup>3</sup> <https://www.cdc.gov/coronavirus/2019-ncov/>

<sup>4</sup> <https://emergency.cdc.gov/han/HAN00426.asp>

<sup>5</sup> <https://www.who.int/health-topics/coronavirus>